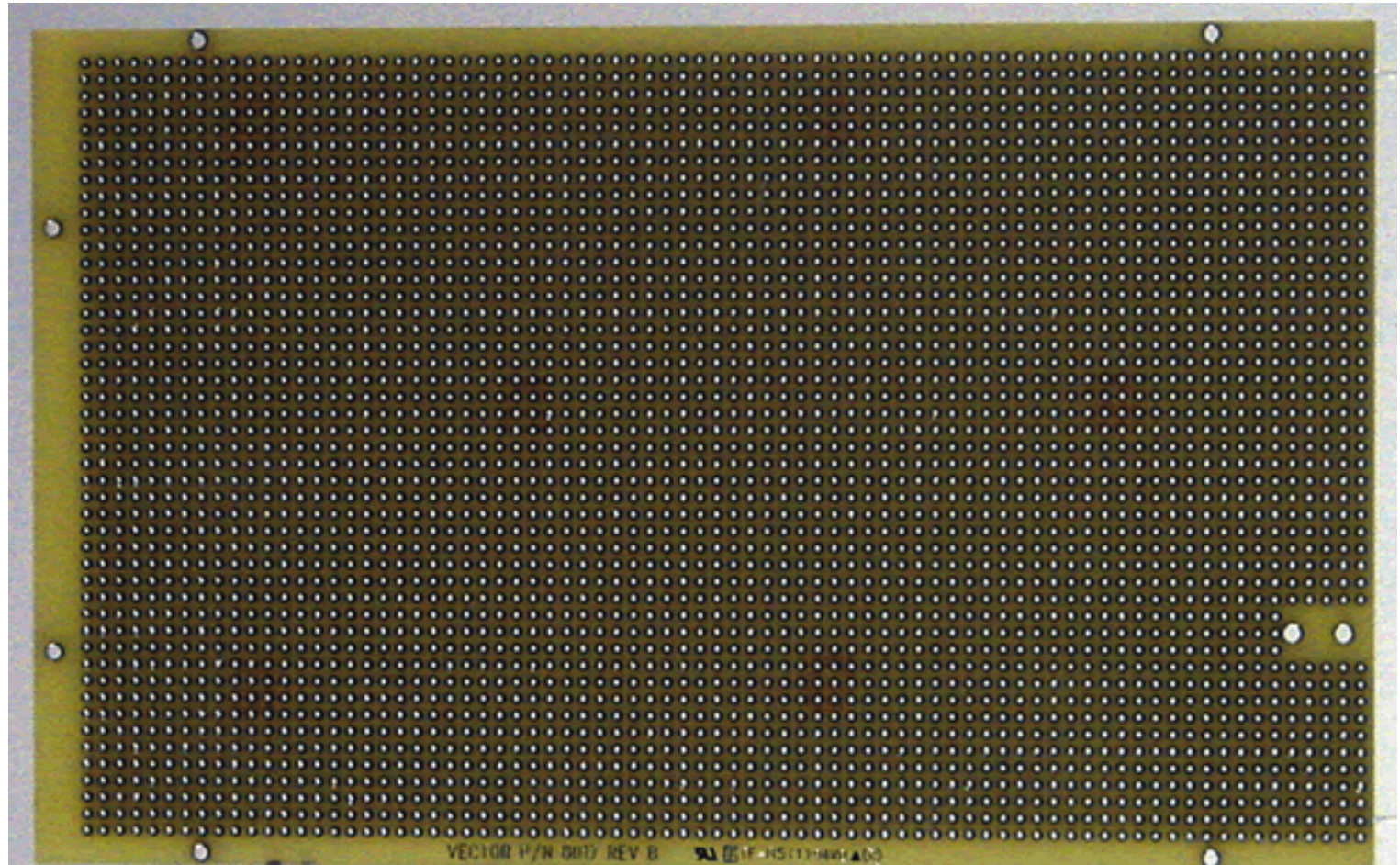


VECTORBORD® PLUGBORD™ PART NO. : 8017



Description :

100 mm x 160 mm, Hole Dia.: 0.6 mm, Grid: 2 mm x 2 mm

Pad-Per-Hole. 2mm Grid Pattern : Q

100 mm height accepts cPCI 2mm J1 (25 row) & J2 (22 row) connectors on edge

Plated thru holes with annular ring

Pads on both sides

Circuit Pattern :

Pad-Per-Hole. 2mm Grid Pattern : Q

Contacts :

N/A

Hole Diameter :

0.6 mm +/- 0.05 { 0.025" +/- 0.002 }

Grid :

2 mm x 2 mm

Dimension { H, W, T } :

100 mm x 160 mm x 1.575 mm { 3.94" x 6.30" x 0.062" }

Material :

FR4 Epoxy Glass { MIL - P13949 type Gf }

Inbord Pin :

K36

J1 Connector :

ORDER 8017J1

UL Flammability Class :

94V - 0